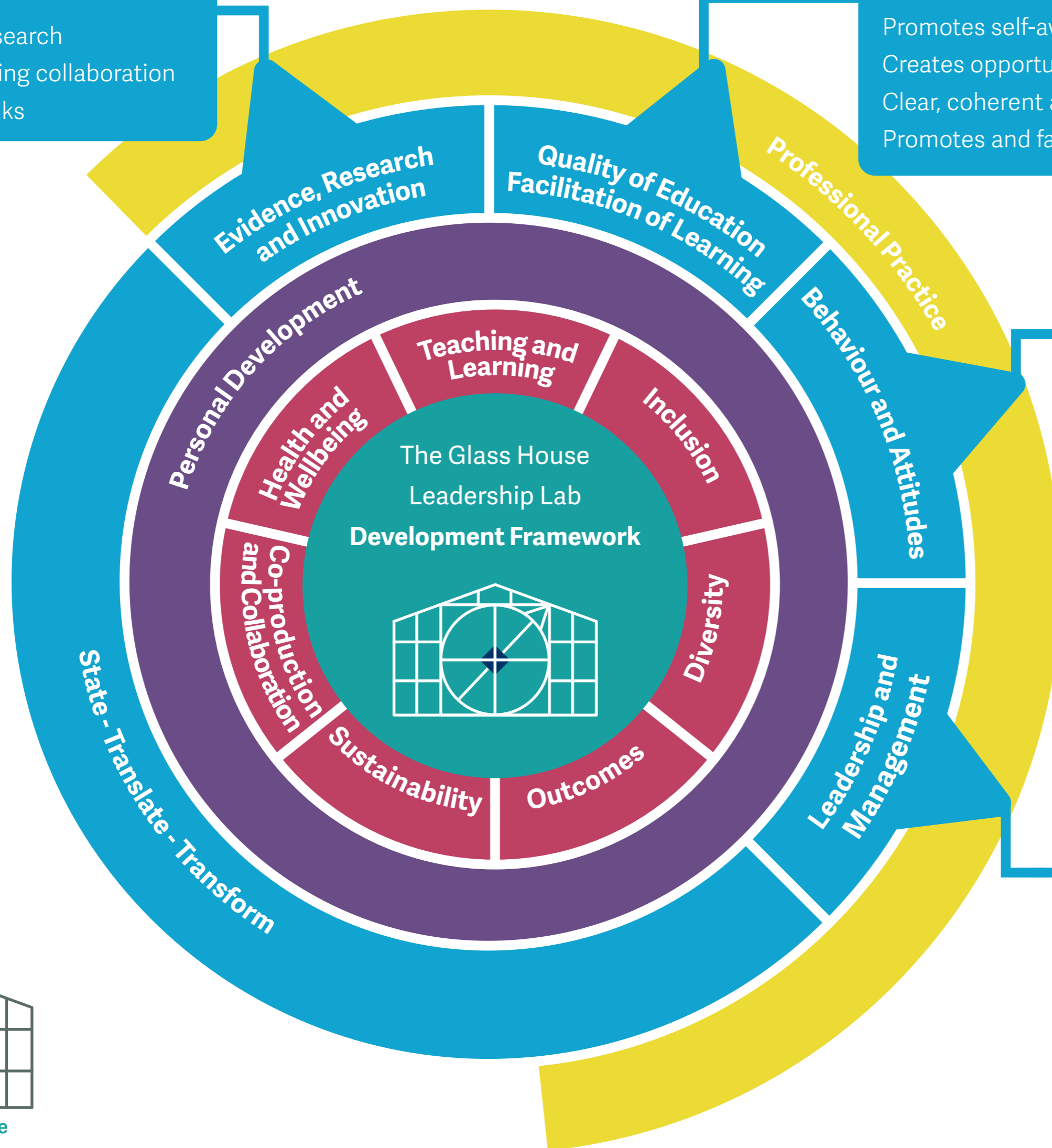


Evidence-based practice
 Striving for quality improvement and outcomes
 Engagement in research
 Creating and seeking collaboration and networking links

Creating a coaching culture
 Providing resources and opportunities for creativity, innovation and application
 Promotes self-awareness, literacy and management
 Creates opportunities for development across areas of interest
 Clear, coherent and comprehensive learning sequences
 Promotes and facilitates progress



Environment fostering readiness to learn
 Clear routines and expectations
 Clear and reasonable systems and policies
 Foster and grow a positive learning environment
 Promote safety and universal accessibility
 Performance

Effective teamworking
 Self-management
 Authenticity
 Change management and leading change
 Compassion
 Inclusivity
 Listening
 Culture building
 Autonomy and accountability

